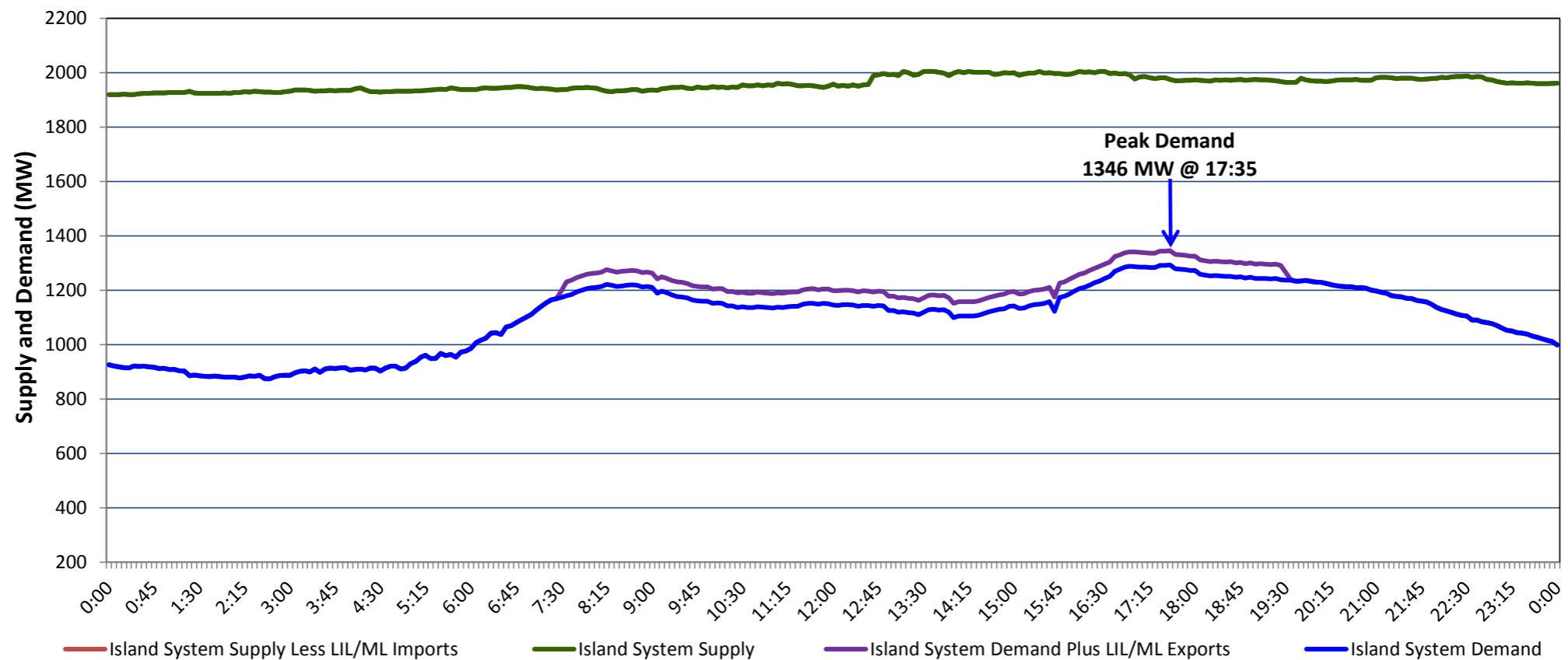


Newfoundland Labrador Hydro (NLH) Supply and Demand Status Report Filed Friday, November 20, 2020

Section 1 Island Interconnected System Supply, Demand & Exports Actual 24 Hour System Performance For Thursday, November 19, 2020



Supply Notes For November 19, 2020

1,2

- A As of 1458 hours, November 18, 2020, Holyrood Unit 3 available at 130 MW (150 MW).
- B At 1238 hours, November 19, 2020, Granite Canal Unit available (40 MW).
- C At 2058 hours, November 19, 2020, Paradise River Unit available (8 MW).

Section 2 Island Interconnected Supply and Demand

Fri, Nov 20, 2020	Island System Outlook ³		Seven-Day Forecast	Temperature (°C)		Island System Daily Peak Demand (MW)	
				Morning	Evening	Forecast	Adjusted ⁷
Available Island System Supply: ⁵	1,985	MW	Friday, November 20, 2020	-3	7	1,285	1,190
NLH Island Generation: ⁴	1,675	MW	Saturday, November 21, 2020	4	6	1,085	992
NLH Island Power Purchases: ⁶	80	MW	Sunday, November 22, 2020	2	-1	1,230	1,136
Other Island Generation:	230	MW	Monday, November 23, 2020	-5	0	1,295	1,200
ML/LIL Imports:	-	MW	Tuesday, November 24, 2020	6	11	1,100	1,007
Current St. John's Temperature & Windchill:	-3 °C	-7 °C	Wednesday, November 25, 2020	0	-3	1,245	1,151
7-Day Island Peak Demand Forecast:	1,295	MW	Thursday, November 26, 2020	1	1	1,180	1,086

Supply Notes For November 20, 2020

3

- Notes:
1. Generation outages for running and corrective maintenance are included. These are not unusual for power system operations. They generally do not impact customer supply. The power system operators schedule outages to system equipment whenever possible to coincide with periods when customer demands are low and sufficient supply reserves are available. However, from time to time equipment outages are necessary and reserves may be impacted.
 2. Due to the Island system having no synchronous connections to the larger North American grid, when there is a sudden loss of large generating units there may be a requirement for some customer's load to be interrupted for short periods to bring generation output equal to customer demand. This automatic action of power system protection, referred to as under frequency load shedding (UFLS), is necessary to ensure the integrity and reliability of system equipment. Under frequency events have typically occurred 5 to 8 times per year on the Island Interconnected System and the resultant customer load interruptions are generally less than 30 minutes. With the activation of the Maritime Link frequency controller during the winter of 2018, UFLS events have occurred less frequently.
 3. As of 0800 Hours.
 4. Gross output including station service at Holyrood (24.5 MW) and improved NLH hydraulic output due to water levels (35 MW).
 5. Gross output from all Island sources (including Note 4).
 6. NLH Island Power Purchases include: CBPP Co-Gen, Nalcor Exploits, Rattle Brook, Star Lake, Wind Generation and capacity assistance (when applicable).
 7. Adjusted for curtailable load, market activities and the impact of voltage reduction when applicable.

Section 3 Island Peak Demand Information Previous Day Actual Peak and Current Day Forecast Peak

Thu, Nov 19, 2020	Actual Island Peak Demand ⁸	17:35	1,346 MW
Fri, Nov 20, 2020	Forecast Island Peak Demand		1,285 MW

Notes: 8. Island Demand / LIL / ML Exports (where applicable) is supplied by NLH generation and purchases, plus generation owned and operated by Newfoundland Power and Corner Brook Pulp & Paper (Deer Lake Power, DLP).